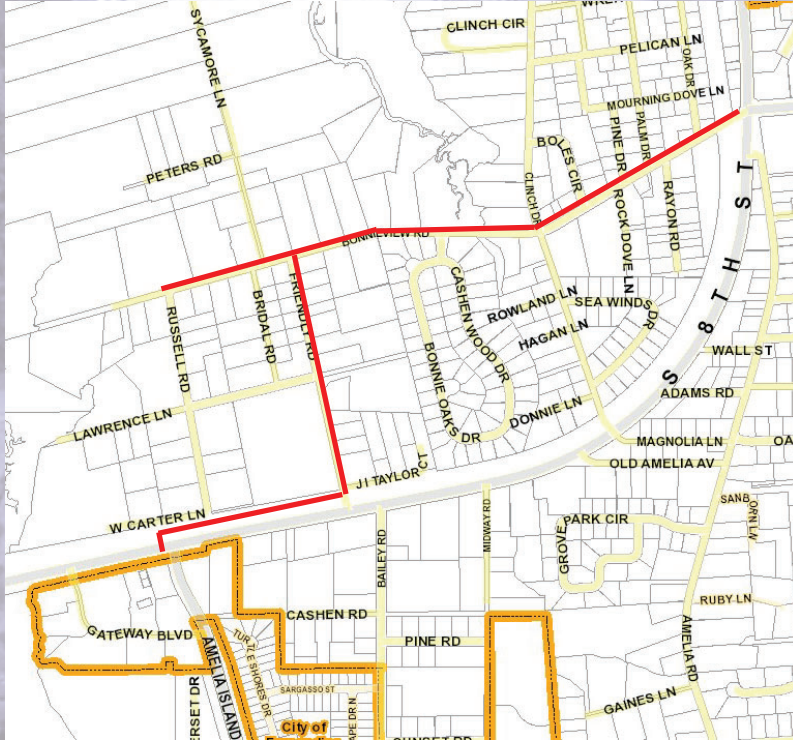




Capital Improvement

Amelia Island Trail Phase 5 Sadler to Amelia Island Parkway BOCC District 1

Project Photo



CIP000060

Project Limits:

Along Bonnieview, Friendly and SR 200 (A1A) from Sadler Road to the Amelia Island Parkway

Project Goals:

- To provide pedestrian and cycling facilities to the Bonnieview / Clinch Drive community connecting the loop from the AIT Phase 4 to the AIPT

Construction Activities:

- Phase 1 - Feasibility
- Phase 2- Design*
- Phase 3- Construction*

Project Schedule:

- Feasibility FY 23/24
- Design & Construction: TBD*

Project Budget:

\$ 225,000 (FDOT Grant)- Phase 1

Phase 2- TBD*

Phase 3- TBD*

\$ 225,000 (Total)

Estimated Annual Maintenance Cost:

\$TBD

* Pending Feasibility Report & Selection

Current Status:

- Planning

Project Team Members:

Engineering Firm: TBD

Contractor: TBD

Construction Engineering Inspection: TBD

Project Manager: Ray Albury